


At Para Vista Primary School, we are dedicated to fostering a nurturing and inclusive environment where every student feels valued, empowered and a sense of belonging.

We create a community which celebrates diversity and promotes respect, honesty, and courage. We are committed to building strong relationships and providing consistent, calm learning environments that support the growth and success of all students.

By embracing differentiated teaching practices and trauma-informed approaches, we ensure that every learner can thrive and contribute positively to our diverse world.

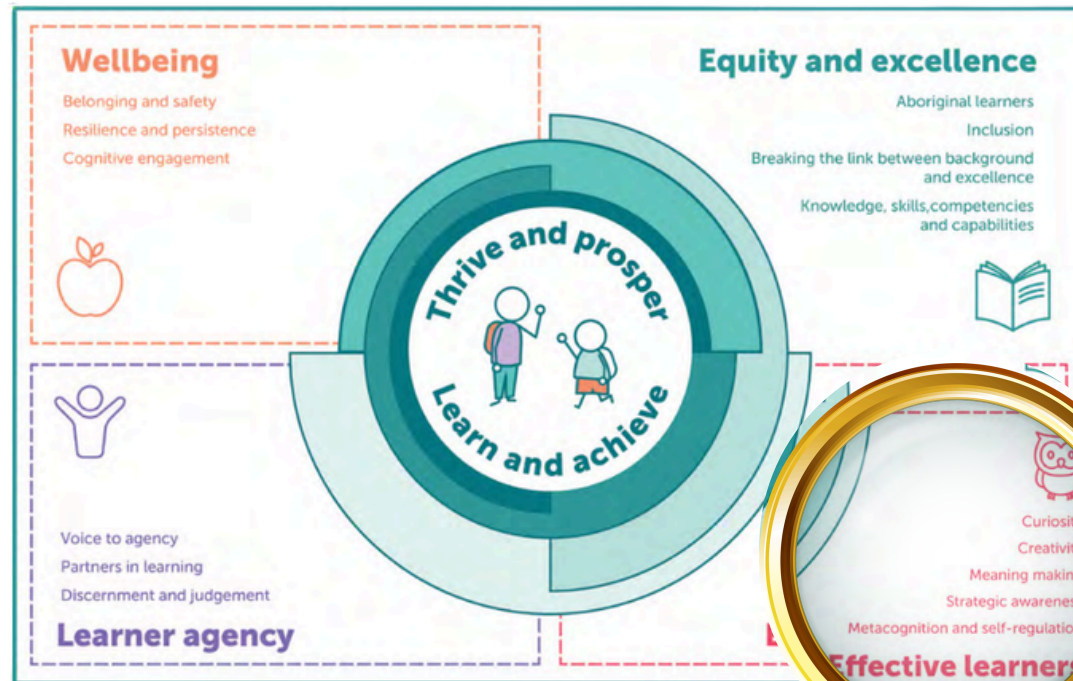
- Belonging
- Resilience
- Cognitive engagement



- Partners in learning





Engaging Children & Young People



Strengthening Supports

- Inclusion / intervention
- SA Curriculum
- Maths



- Self regulation - BSEM
- Meta cognition - SRL




Effective Teaching

Collective responsibility

Tight and flexible

Evaluate for impact

